

FILED FOR RECORD  
MARTIN COUNTY, FLA.

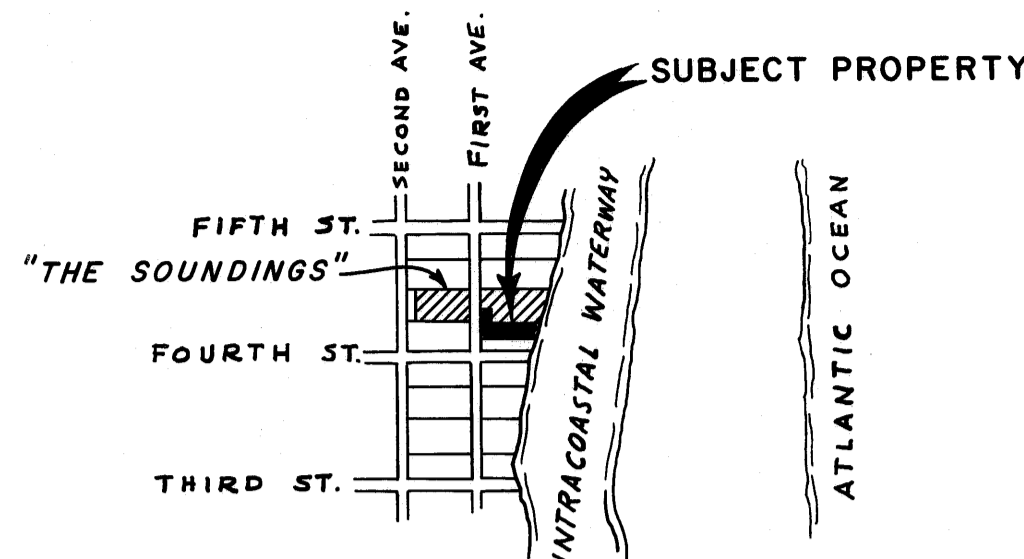
1973 AUG 21 09:10:06

LOUISE V. ISAACS  
COUNTY CLERK

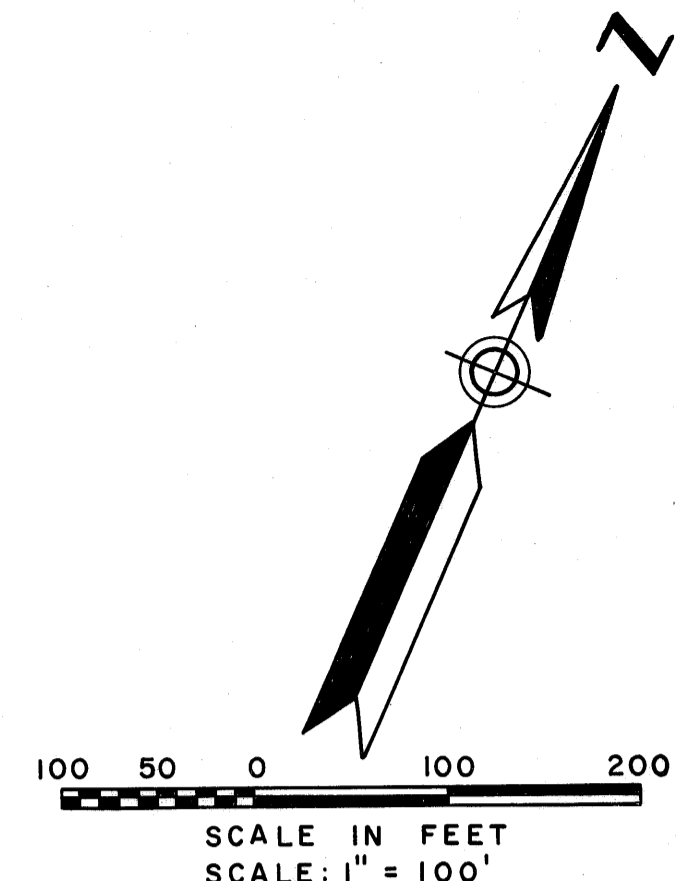
# REPLAT OF BLOCK 7 "THE SOUNDINGS"

A REPLAT IN  
GOMEZ GRANT  
MARTIN COUNTY, FLORIDA

GEE & JENSON  
CONSULTING ENGINEERS  
WEST PALM BEACH, FLORIDA  
FEBRUARY 1973



LOCATION SKETCH  
SCALE: 1" = 50 CHAINS



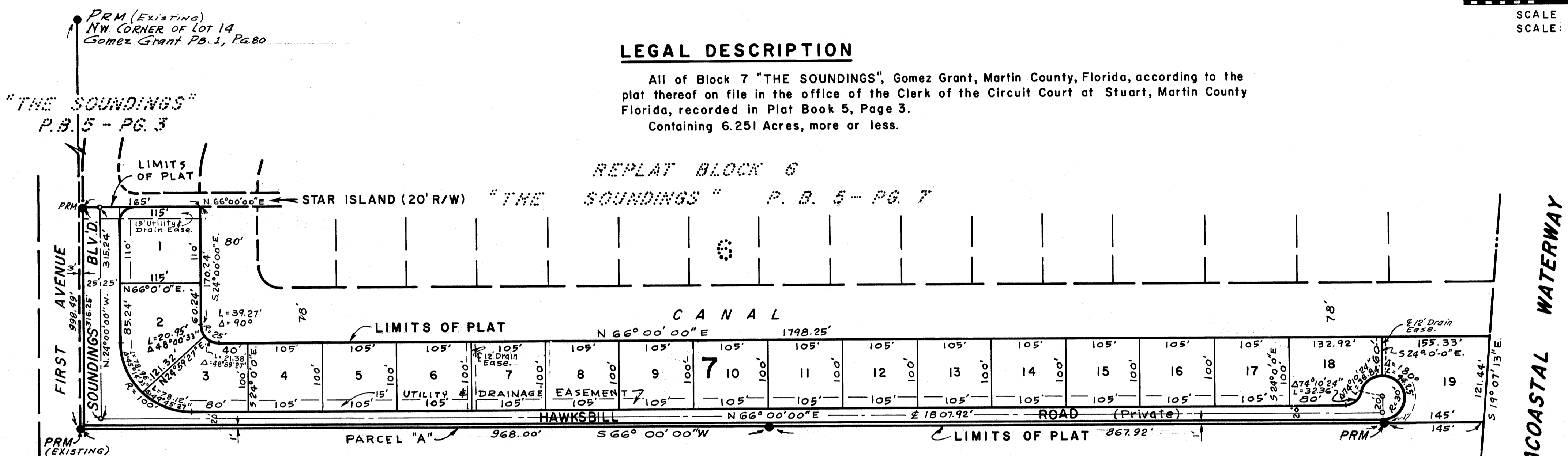
STATE OF FLORIDA S.S.  
COUNTY OF MARTIN  
I, LOUISE V. ISAACS, County Clerk of Martin County, Florida, hereby certify that this Plat has been examined and that it complies in form with all the requirements of the statutes of the State of Florida pertaining to maps and plats, and that this Plat has been filed for record in PLATBOOK 5, page 102 Public Records of Martin County, Florida, this 21<sup>st</sup> day of August, A.D. 1973.

LOUISE V. ISAACS  
County Clerk, Martin County

By: Dorcas M. Carter, D.C.  
No. 198937

### LEGAL DESCRIPTION

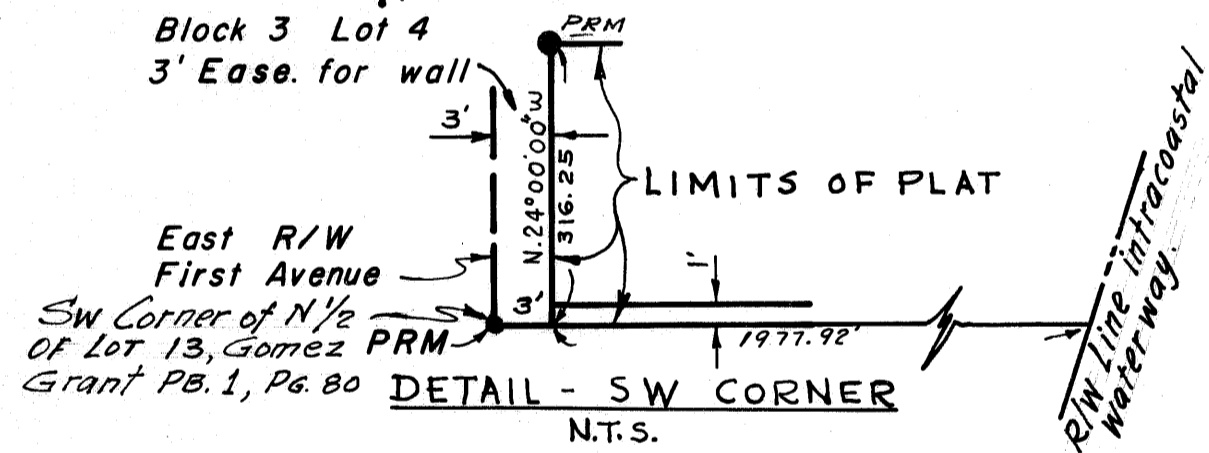
All of Block 7 "THE SOUNDINGS", Gomez Grant, Martin County, Florida, according to the plat thereof on file in the office of the Clerk of the Circuit Court at Stuart, Martin County Florida, recorded in Plat Book 5, Page 3. Containing 6.251 Acres, more or less.



"THE SOUNDINGS"  
P.B. 5 - PG. 3

REPLAT BLOCK 6  
STAR ISLAND (20' R/W) "THE SOUNDINGS" P.B. 5 - PG. 7

P.B. 1 - P.G. 80 S 1/2 OF LOT 13



### DEDICATION

STATE OF FLORIDA ss  
COUNTY OF MARTIN ss  
KNOW ALL MEN BY THESE PRESENTS, that HOBE SOUND NORTH, INC., a Florida Corporation and JOEL F. PYLE, SR., a Single Person, the owners of the tract of land lying and being in Gomez Grant, Martin County, Florida, shown hereon as REPLAT OF BLOCK 7, "THE SOUNDINGS", has caused the same to be surveyed and platted and they hereby dedicate to the perpetual use of the public, the use of the Easements for the construction and maintenance of Public Utilities.

AND FURTHERMORE, the Owners do hereby dedicate Hawksbill Road and Soundings Boulevard (Private Roads) as shown hereon to the Property Owners of this Subdivision, the streets and walk as shown. The Board of County Commissioners of Martin County, Florida, shall have no responsibility, duty or liability regarding such streets.

AND FURTHERMORE, the Owners do hereby dedicate to the said Property Owners of this Subdivision Parcel A as shown as a Buffer Strip.

IN WITNESS WHEREOF, HOBE SOUND NORTH, INC. has caused these presents to be executed by its President and attested by its Assistant-Secretary, joined by JOEL F. PYLE, SR., a Single Person, this 11 day of May, A.D. 1973.

HOBE SOUND NORTH, INC.

Attest: William Scott  
Assistant-Secretary

By: Albert C. Schenholm Jr  
President

Laron Bagwell  
Witness for J.F. PYLE, Sr.'s Signature

Joel F. Pyle Sr.  
JOEL F. PYLE, Sr., a Single Person

John S. Goers  
Witness for J.F. PYLE, Sr.'s Signature

### ACKNOWLEDGEMENT:

STATE OF FLORIDA ss  
COUNTY OF MARTIN ss  
BEFORE ME, the undersigned Notary Public, personally appeared ALBERT SCHENHOLM, JR. and WILLIAM SCOTT, President and Assistant-Secretary, respectively, of HOBE SOUND NORTH, INC., a Florida Corporation, to me known to be the individuals described in and who executed the foregoing certificate of dedication, and they duly acknowledge before me that they executed the same, as such officers for and in behalf of said Corporation.  
WITNESS, my hand and official seal at Martin County, Florida, this 11<sup>th</sup> day of May, A.D. 1973.

Betty Lou Cipin  
Notary Public, State of Florida

My Commission expires: August 2, 1974

### ACKNOWLEDGEMENT:

STATE OF FLORIDA ss  
COUNTY OF MARTIN ss  
BEFORE ME, the undersigned Notary Public, personally appeared JOEL F. PYLE, SR., a Single Person, to me known to be the individual described in and who executed the foregoing dedication, and he duly acknowledged before me he executed the same.  
WITNESS, my hand and official seal at Martin County, Florida, this 11<sup>th</sup> day of May, A.D. 1973.

Betty Lou Cipin  
Notary Public, State of Florida

My Commission expires: August 2, 1974

### CONSENT OF MORTGAGEE

STATE OF FLORIDA ss  
COUNTY OF MARTIN ss  
The undersigned Mortgagee hereby join and consent to the areas dedicated hereon which they might claim under the mortgage held by them on said property.  
IN WITNESS, WHEREOF, the undersigned Corporation has caused these presents to be executed by its President and attested by its Secretary.

ATTEST: FIRST FEDERAL SAVING & LOAN ASSOCIATION  
of Martin County, Florida.  
Katherine B. Cole President  
J. W. [Signature] Secretary

### ACKNOWLEDGEMENT:

STATE OF FLORIDA ss  
COUNTY OF MARTIN ss  
BEFORE ME, the undersigned Notary Public, personally appeared PAUL J. HENNINGS and PAUL GLIEDMAN, President and Secretary respectively, of FIRST FEDERAL SAVING & LOAN ASSOCIATION of Martin County, Florida, a U.S. Corporation, to me known to be individuals described in and who executed the foregoing certificate of dedication, and they duly acknowledged before me that they executed the same, as such officers for and in behalf of said Corporation.  
WITNESS, my hand and official seal at Martin County, Florida, this 3 day of May, A.D. 1973.

Anna M. Larson  
Notary Public, State of Florida

My Commission expires: March 30, 1975

### TITLE CERTIFICATION

I, THOMAS C. MATEVIA, a member of the Florida Bar, hereby certify that: apparent record title to the land described and shown on this plat is in the name of the person, persons, corporation, or other entity executing the dedication hereon.  
DATED this 11 day of August, A.D. 1973.

Thomas C. Matevia  
Attorney at law  
Tequesta, Florida.

### COUNTY APPROVAL

Approved: Aug 14, A.D. 1973  
Board of County Commissioners

By: Thomas E. [Signature]  
Chairman

By: Kenneth J. [Signature]  
County Engineer

Approved: August 20, A.D. 1973  
Planning and Zoning Commission

By: Paul E. [Signature]  
Chairman

Approved: Stephen W. [Signature]  
County Attorney

### NOTES

All corner lot radii are 25 feet except as shown and the lot dimensions are to the straight line intersections, except where arc distances are shown.

Easements are for Public Utilities unless otherwise noted.

● denotes Permanent Reference Monument  
○ denotes Permanent Control Point

Bearings shown hereon are relative to an assumed meridian.

### SURVEYOR'S CERTIFICATE

STATE OF FLORIDA ss  
COUNTY OF MARTIN ss  
I HEREBY CERTIFY, that the plat shown hereon is a true and accurate representation of a survey made under my direction and that said survey is accurate to the best of my knowledge and belief, and that permanent reference monuments (P.R.M.) have been placed as required by law and that permanent control points shall be set as required by law.

William E. [Signature]  
Registered Land Surveyor  
Florida Certificate No. 2283